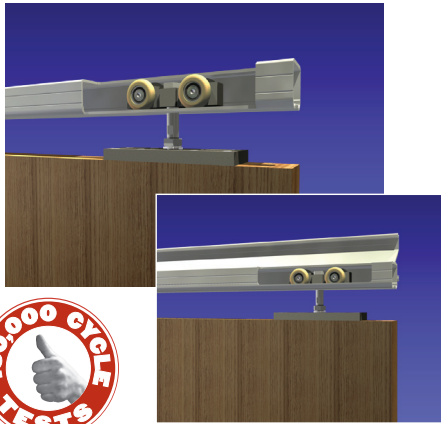


SINGLE TRACK SYSTEMS

HEAVY-DUTY

C-818HD HANGER C-104 OR C-108 SIDE-MOUNT TRACK

Up to
450 lbs.
per panel



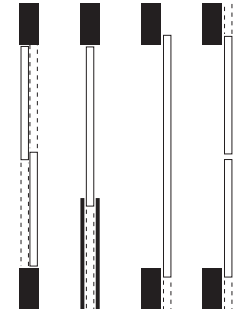
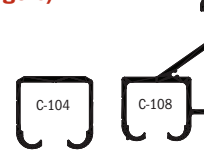
Heavy Duty Steel Hanger for Large Single or Bi-Parting Doors. Also for Large Single or Bi-Parting Wall Mounted Doors.
Hanger is constructed using four precision ball bearings, nylon tire wheels on solid, machined steel body. Complete with 1/2" diameter bolt with 3/8" [38.1 mm] adjustment range.

C-108 Side-Mount Track, all-in-one track that eliminates the need for additional hardware or millwork for wall mount sliding door conditions.

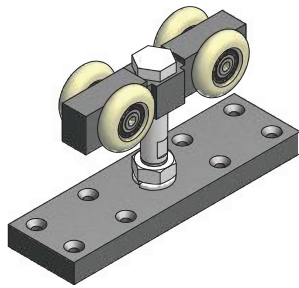
- Use with Extruded Aluminum **C-104 Track**, 6063T5 Alloy
- Use with Extruded Aluminum **C-108 Track**, 6063T5 Alloy
- Load Capacity **450 lbs (two hangers)**



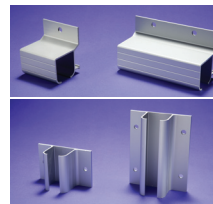
We specialize in Curved Track applications. See page 7 for details.



C-818HD HANGER COMPLETE HANGER COMPLETE WITH SCREWS



OPTIONAL PRODUCTS



C-402 Side-Mount Bracket/
C-403 Side-Mount Joiner or
C-406/C-407 Top Mount
Bracket. (See page 68 for
more details).



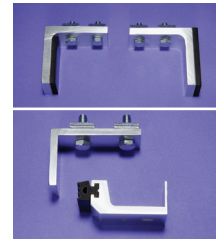
C-110 Fascia & C-110
End Cap. (See page 67
for more details).



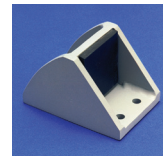
C-90 Door Locks & Pulls
Series. (See pages
72-75 for more details).



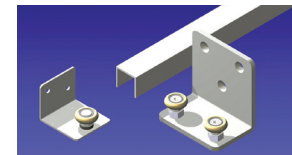
C-80 Door Locks & Pulls
Series. (See pages
72-75 for more details).



CAS-1 or CAS-2 Stops.
(See page 69 for more details).

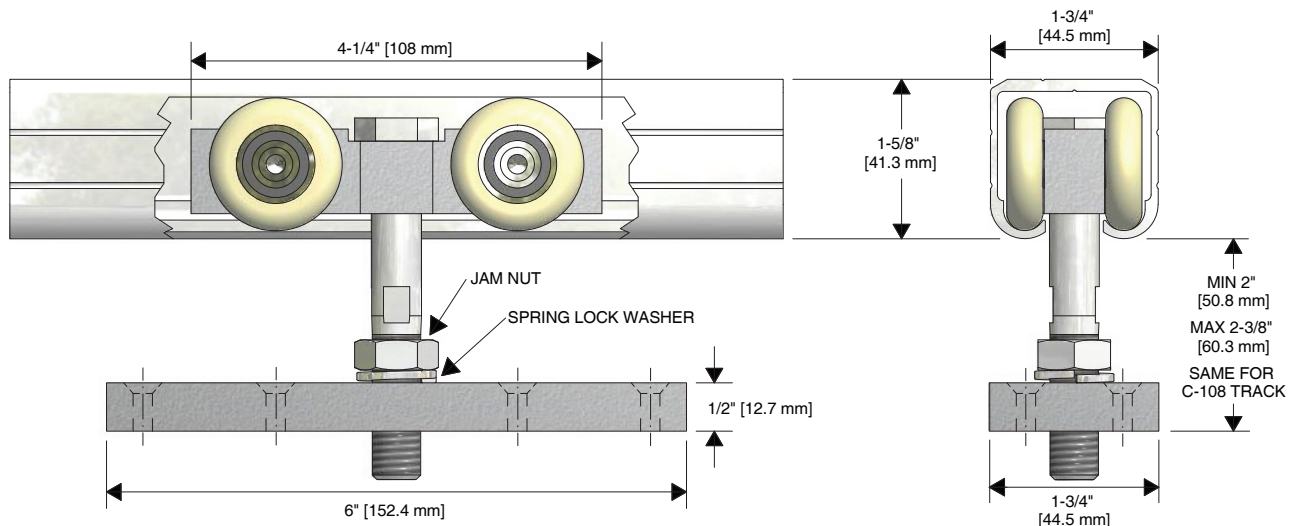


C-102HD Floor
Stop. (See page 69
for more details).



CSM-913-108 or CSM-913-2HD
Side-Mount Guides with
C-914 Guide Channel.
(See page 70 for more details).

C-818HD HANGER WITH C-104 TRACK DETAIL



www.kncrowder.com

A PRODUCT OF K. N. CROWDER MFG. INC.