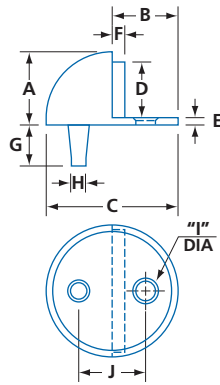
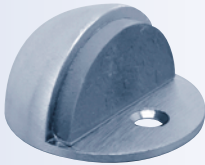


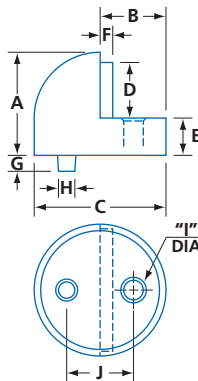
LOW DOME DOOR STOP



- Mounting hardware included
- Model #T201 riser for #T200 in a 1/4" (19mm) extra height option
- Finish: bright brass, satin brass and satin chrome

MODEL NUMBER	MATERIAL	FINISH	A	B	C DIA	D	E	F	G	H DIA	I DIA	J	PER CASE	WEIGHT LBS / KG
T200	Zinc die-cast	C3, C4, C26D	1 (25)	7/8 (22)	1 3/4 (44.8)	3/4 (19)	3/32 (2.4)	3/16 (4.7)	1/2 (12.7)	9/32 (7.1)	1/4 (6.4)	15/16 (24.6)	30	5.4 / 2.5

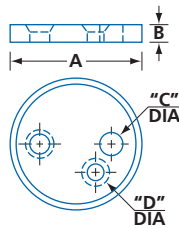
HIGH DOME DOOR STOP



- Mounting hardware included
- Model #T201 riser for #T218 in a 1/4" (19mm) extra height option
- Finish: bright brass, satin brass and satin chrome

MODEL NUMBER	MATERIAL	FINISH	A	B	C DIA	D	E	F	G	H DIA	I DIA	J	PER CASE	WEIGHT LBS / KG
T218	Zinc die-cast	C3, C4, C26D	1 7/16 (36)	7/8 (22)	1 3/4 (44.8)	3/4 (19)	1/2 (12.7)	3/16 (4.7)	5/16 (8)	1/4 (6.4)	17/64 (6.7)	15/16 (24.6)	25	5.6 / 2.5

FLOOR RISER



- Riser for model #T200 and #T218
- Mounting hardware included
- Finish: satin chrome

MODEL NUMBER	MATERIAL	FINISH	A DIA	B	C DIA	D DIA	PER BOX	WEIGHT LBS / KG
T201	Zinc die-cast	C26D	1 3/4 (44.8)	1/4 (6.4)	5/16 (7.9)	1/4 (5.9)	50	4.0 / 1.8

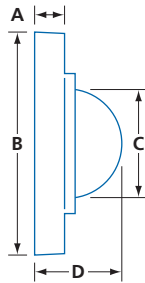
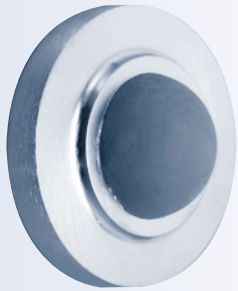
R1 07/08

05.011

DOOR STOPS

GENERAL HARDWARE

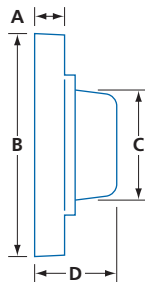
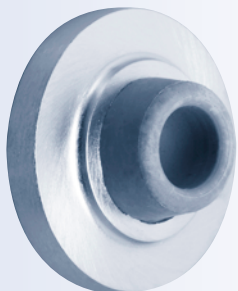
CONVEX WALL STOP



- Mounting hardware included
- Finish: bright brass and satin chrome

MODEL NUMBER	MATERIAL	FINISH	A	B DIA	C DIA	D	PER BOX	WEIGHT LBS / KG
T231	Zinc die-cast	C3, C26D	11/32 (8.7)	2 1/2 (63.5)	1 5/16 (33.3)	1 (25.4)	25	4.8 / 2.2

CONCAVE WALL STOP



- Mounting hardware included
- Finish: bright brass and satin chrome

MODEL NUMBER	MATERIAL	FINISH	A	B DIA	C DIA	D	PER BOX	WEIGHT LBS / KG
T233	Zinc die-cast	C3, C26D	11/32 (8.7)	2 1/2 (63.5)	1 1/8 (29)	15/16 (23.3)	25	4.5 / 2.0

R1 07/08