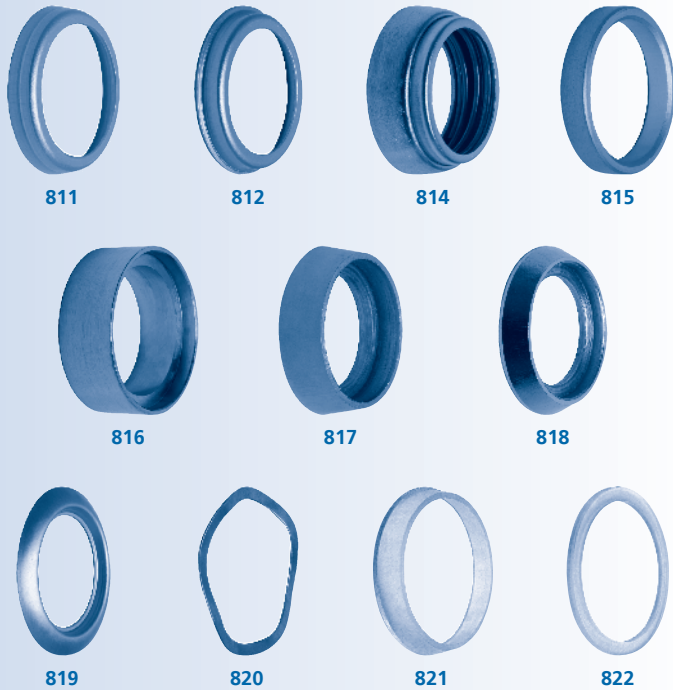
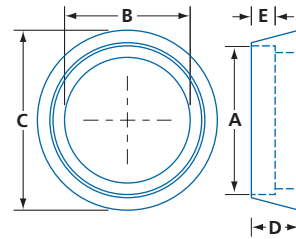


## CYLINDER TRIM RING AND GUARD

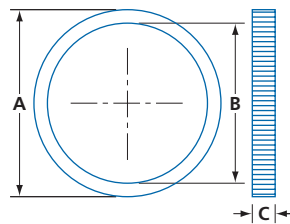


- 1 5/32" (29.4 mm) cylinder diameter
- 817 & 818 are hardened steel security cylinder trim rings



MODEL NUMBER	MATERIAL	FINISH	A DIA	B DIA	C DIA	D	E	PER BOX	WEIGHT LBS / KG
811A	Aluminum	C10B, C26D, C28	1 13/32 (36.0)	1 5/32 (29.3)	1 1/2 (38.0)	7/32 (5.5)	N/A	100	0.4 / 0.2
812A		C26D, C28			1 9/16 (39.6)				1.0 / 0.5
812B	Brass	C3, C26	1 13/32 (36.0)	1 3/16 (30.0)		9/16 (14.6)	N/A	50	2.6 / 1.1
814S	Steel							100	0.9 / 0.4
815A	Aluminum	C28	N/A	1 5/32 (29.0)	1 3/8 (35)	1/4 (6.4)		100	0.9 / 0.4
816B	Brass	C26D	1 13/32 (36)	1 3/16 (30.0)	1 1/2 (38)	1/2 (12.7)	3/16 (4.4)	50	4.2 / 1.9
817S	Steel	C10B, C26D			1 11/16 (42.9)	7/16 (11.4)	9/32 (7.0)		4.8 / 2.2
818S			1 1/2 (37.8)	9/32 (7.3)	3/16 (4.4)	3.0 / 1.4			
819A	Aluminum	C28	1 11/32 (34.0)		1 3/4 (44.0)	1/8 (3.3)		100	0.1 / 0.1
820S	Stainless steel	Stainless steel	N/A			5/32 (4.1)		500	0.6 / .03
821P	Plastic	Plastic	1 1/4 (31.4)	1 5/32 (29.3)	1 3/8 (35)	7/32 (5.4)	N/A	100	0.1 / 0.1
822P			N/A			1/16 (1.7)			

## MORTISE CYLINDER RING NUT



- Solid brass locking ring nut for 1 5/32" (29 mm) mortise cylinder

MODEL NUMBER	MATERIAL	FINISH	A	B	C	PER BOX	WEIGHT LBS / KG
2315-2	Brass	Brass	1 5/16 (33.5)	1 1/8 (28.6)	5/32 (4.1)	100	1.6 / 0.7

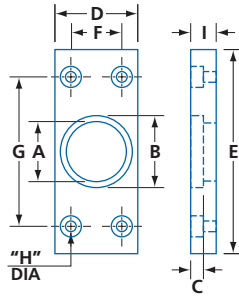
Dimensions unless specified otherwise are: Inches (Millimeters)

# 04.421

# GUARDS & LATCH PROTECTORS

## SECURITY PRODUCTS

### SECURE FAST LOCK GUARD



- Heavy aluminum plate
- Attaches to metal door with 4 steel 3/16" (4.8 mm) pop rivets (included)
- 1/4" (6.4 mm) cylinder recess

MODEL NUMBER	FINISH	A	B	C	D	E	F	G	"H" DIA	I	PER BOX	WEIGHT LBS / KG
5510	Aluminum	1 3/16 (30.1)	1 13/32 (36.0)	1/4 (6.0)	1 5/8 (41.4)	4 (102)	1 (25.5)	3 (76)	13/32 (10.5)	1/2 (12.8)	20	5.8 / 2.6

### LATCH PROTECTOR



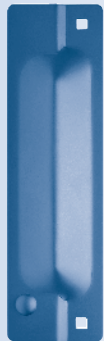
307



307S



307L



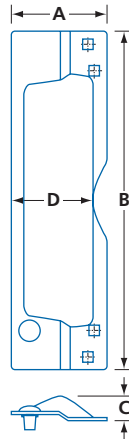
311P



311S



311LP



- Unit covers the latch area of the door, thereby providing added protection from burglaries, vandalism or abuse
- For use with maximum 2 1/2" (63.5 mm) diameter mortise or 3 5/8" (92.1 mm) cylindrical lock
- Made of heavy gauge steel
- 311P and 311LP are supplied with security pin to prevent separation of the door and frame
- Individually carded and supplied with carriage bolts and nuts

MODEL NUMBER	A	B	C	D	FINISH	PER CASE	WEIGHT LBS / KG
307	3 (76.3)	7 (177.7)	5/16 (7.7)	N/A	C28, C20D	40	30.8 / 14.0
307S				2 3/4 (70.0)			
307L				2 9/16 (65.0)			
311P	3 3/32 (78.2)	10 7/8 (276.5)		N/A			50.1 / 23.1
311S				2 7/8 (73.0)			
311LP				2 5/8 (67.0)			44.7 / 20.3

Dimensions unless specified otherwise are: Inches (Millimeters)